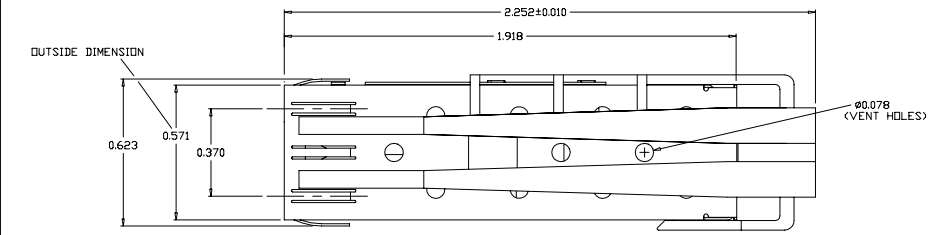
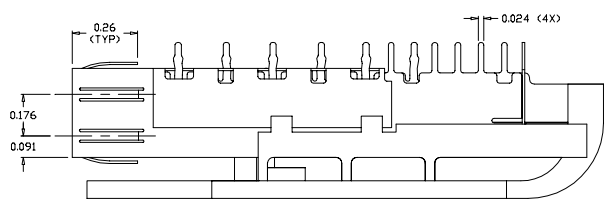
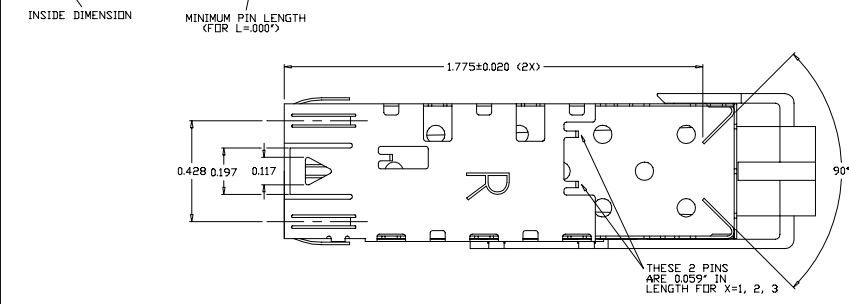
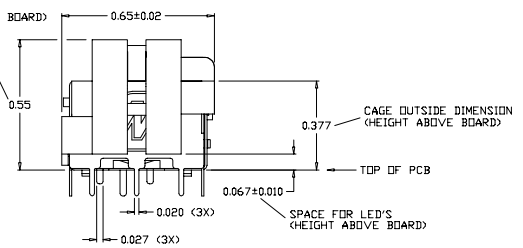
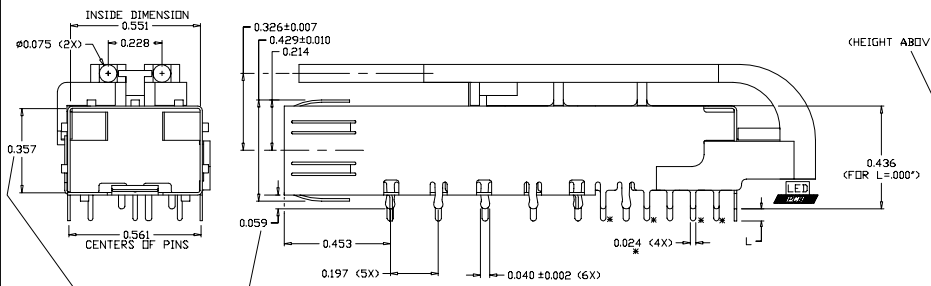


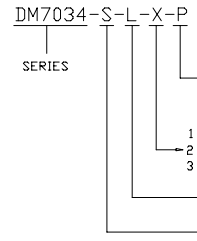
REVISION AND CHANGE EFFECTIVITY DATE				
LTR.	ECN	DESCRIPTION	DATE	APP'D.
A	ED27	ADJUSTED DIMS; INC. TOL. ON PCB; ADDED NOTES FOR RoHS, OPERATING AND STORAGE TEMP. AND LED	03/23/07	AP



- NOTES:
- 1) MATERIAL: 0.010" THICK BRASS ALLOY; C2680 - FULL HARD
  - 2) PLATING: SEE PLATING OPTIONS
  - 3) CAGE IS SOLDERED AT SEAM AT 5 LOCATIONS
  - 4) LIGHTPIPE MATERIAL: CLEAR POLYCARBONATE
  - 5) CAGE IS STAMPED "R" FOR RoHS COMPLIANCE
  - 6) MAXIMUM LED HEIGHT: 0.057"
  - 7) OPERATING AND STORAGE TEMPERATURE: -40°C TO +130°C



ORDERING INFO:



PLATING OPTIONS:

- R FOR 100µIN MATTE TIN OVER 50µIN NICKEL RoHS COMPLIANT
  - G FOR FLASH GOLD OVER 50µIN NICKEL RoHS COMPLIANT
  - N FOR 100µIN NICKEL RoHS COMPLIANT
- 1 - L = .000" (RECOMMENDED PCB THICKNESS OF LESS THAN .055)
  - 2 - L = .021" (RECOMMENDED PCB THICKNESS BETWEEN .056-.078)
  - 3 - L = .051" (RECOMMENDED PCB THICKNESS BETWEEN .079-.108)

DO NOT SCALE DRAWING.

EXPERIMENTAL NO:		DIVISION ASSIGNED: <b>dataMate Division</b>	
TOLERANCE UNLESS OTHERWISE SPECIFIED	MATERIAL: SEE NOTES	DRAWN BY: A. PIRILLIS	DATE: 11/28/06
METRIC INCHES	FINISH:	CHECKED BY: B. SKEPNEK	DATE: 11/28/06
FRACTIONAL DEC: XX ± .010 XXX ± .005		ENGR. APPROVAL: J. NOWAK	DATE: 11/28/06
± ANGLES ±		APPROVED BY: A. CHIAPPETTA	DATE: 11/28/06
TOOLING DWG □		PART NO. CLASSIFICATION:	
PART DWG □			
BREAK SHARP EDGES REMOVE ALL BURRS			
TITLE: SFP CAGE - ONE PIECE WITH PRESS FIT PINS AND LIGHTPIPE		SIZE: C	CODE IDENT.:
DWG. NUMBER: DM7034-S-L-X-P		Rev.:	A
SCALE:		SHT. 1 OF 2	

dataMATE

THE INFORMATION DISCLOSED IN THIS DOCUMENT IS PROPRIETARY TO METHODE ELECTRONICS, INC. AND MAY NOT BE USED FOR MANUFACTURE OR ANY OTHER PURPOSE WITHOUT THE WRITTEN CONSENT OF METHODE. ARTICLES SUBJECT TO CHANGE AS THEY MAY OCCUR WITH RESPECT TO PRODUCT IMPROVEMENT.

