



METHODE ELECTRONICS, INC.

Data Solutions Group

Methode's CTI line of NEMA Wall Mount Enclosures are manufactured to be compliant with the National Electrical Manufacturers Association's Type 12 Standard. NEMA 12 enclosures are intended for indoor use to provide a degree of protection against dust, falling dirt, water, and non-corrosive liquids.

NEMA Wall Mount Enclosures have the following weight capacities:

1200NEMA, 12 RU, 150 lbs.

1900NEMA, 19 RU, 250 lbs.

2600NEMA, 26 RU, 300 lbs.



ME NEMA WALL MOUNT ENCLOSURES

Construction

- 14 gauge center body and rear section
- 14 gauge rear section with over-center latches and locking latch with dust cover
- 16 gauge front door with draw latches and locking latch with dust cover
- 12 gauge mounting rails with #12-24 holes

Cable Management

- 1 – 3" conduit knockouts on top and bottom of rear sections
- 1 – 3" conduit knockouts on sides of rear section
- A variety of 19" cable organizers (optional)

Cooling and Power

- Gland plates on each side panel for optional fan and filters
- 19" rack mount power strips (optional)

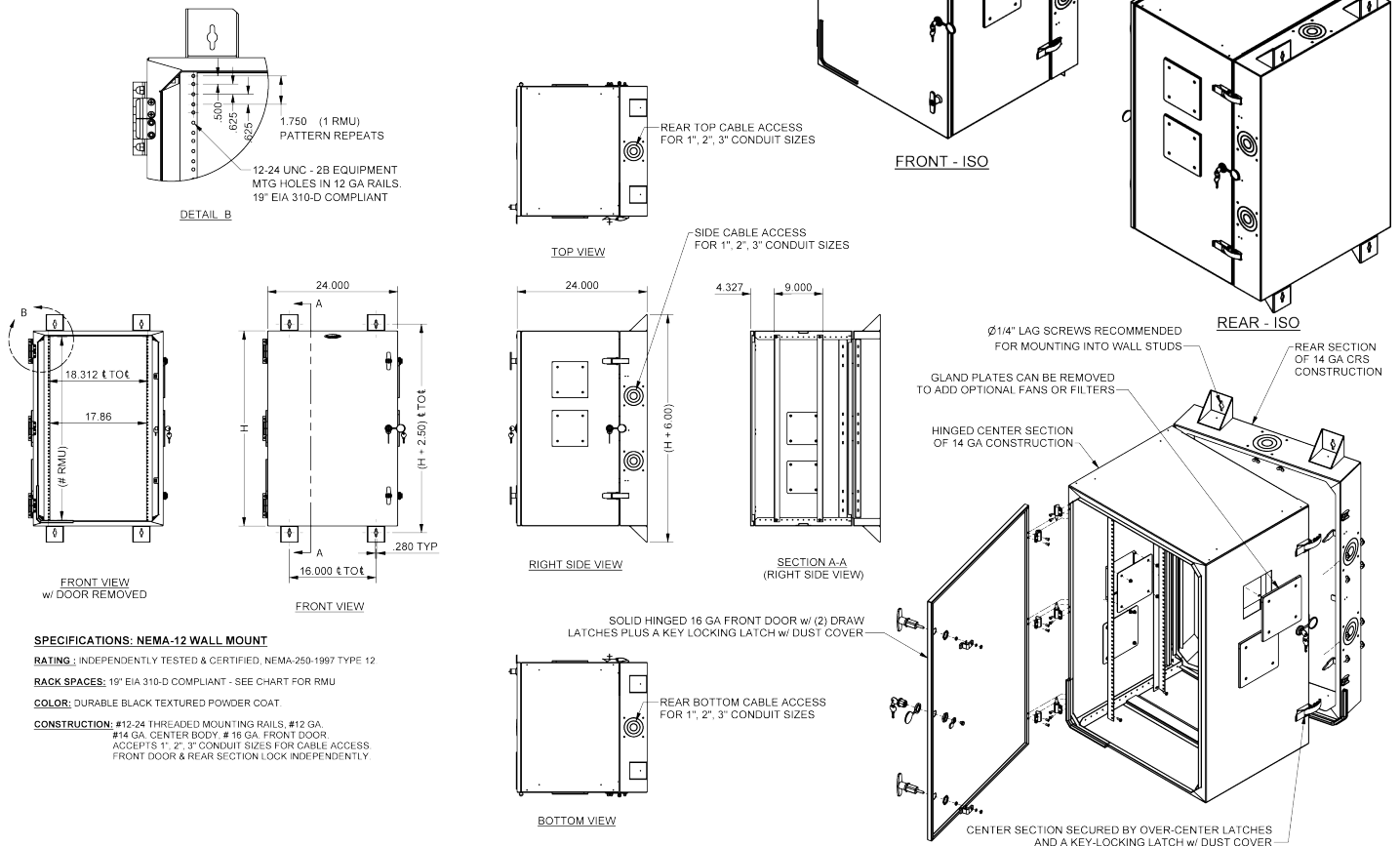
For more information on accessories for this product, please contact your Methode/CTI representative.



METHODE ELECTRONICS, INC.

Data Solutions Group

ME NEMA WALL MOUNT ENCLOSURES



SPECIFICATIONS: NEMA-12 WALL MOUNT
RATING: INDEPENDENTLY TESTED & CERTIFIED, NEMA-250-1997 TYPE 12
RACK SPACES: 19" EIA 310-D COMPLIANT - SEE CHART FOR RMU
COLOR: DURABLE BLACK TEXTURED POWDER COAT.
CONSTRUCTION: #12-24 THREADED MOUNTING RAILS, #12 GA, #14 GA, CENTER BODY; #18 GA, FRONT DOOR. ACCEPTS 1", 2", 3" CONDUIT SIZES FOR CABLE ACCESS. FRONT DOOR & REAR SECTION LOCK INDEPENDENTLY

ME NEMA Wall Mount Enclosures are provided standard with a front door, center body and rear section. Should your needs require a custom version of any standard NEMA Wall Mount platform, please contact your Methode Electronics representative. We can develop a custom solution to meet your specific requirements. (Extended lead times on custom product configurations may apply.)

Part Number	Height	Width	Depth	RU
ME-1200NEMAWM	24"	24"	24"	12
ME-1900NEMAWM	36"	24"	24"	19
ME-2600NEMAWM	48"	24"	24"	26